

Tide Heights: METRES

2.00 = 2 Metre High Tide

Sunrise: 0600

Sunset: 1800

Mentawai's, G-Land, Nias,
Lombok & other Tide Charts
order at www.indosurf.com.au



BENOA BALI

Lat 8° 45S, Long 115° 13E

Time: 24 Hour format

Time Zone -800

Copyright: This official Tide Chart is issued under an Exclusive Licence and may not be reproduced without prior approval of **Indo Surf & Lingo**

© **INDO SURF & LINGO - Official BALI TIDE CHART - JANUARY 2017** ©

DATE	0000	0100	0200	0300	0400	0500	0600	0700	0800	0900	1000	1100	1200	1300	1400	1500	1600	1700	1800	1900	2000	2100	2200	2300
1 SU	2.45	2.23	1.82	1.32	0.79	0.31	0.12	0.23	0.52	0.93	1.37	1.73	1.96	1.97	1.77	1.46	1.13	0.84	0.74	0.89	1.19	1.56	1.97	2.31
2 M	2.45	2.35	2.03	1.58	1.08	0.57	0.21	0.18	0.40	0.75	1.18	1.59	1.89	2.01	1.92	1.65	1.33	1.01	0.78	0.78	1.02	1.34	1.70	2.07
3 TU	2.33	2.37	2.18	1.80	1.34	0.87	0.44	0.23	0.33	0.63	1.01	1.42	1.77	1.98	2.01	1.84	1.54	1.22	0.93	0.78	0.87	1.14	1.45	1.78
4 W	2.08	2.25	2.21	1.95	1.56	1.14	0.73	0.41	0.34	0.54	0.87	1.24	1.62	1.90	2.03	1.98	1.76	1.46	1.16	0.92	0.83	0.97	1.22	1.50
5 TH	1.78	2.00	2.09	1.99	1.72	1.37	1.01	0.68	0.48	0.52	0.76	1.08	1.43	1.75	1.96	2.03	1.94	1.71	1.43	1.17	0.96	0.91	1.03	1.24
6 F ☾	1.46	1.68	1.83	1.87	1.76	1.53	1.24	0.95	0.72	0.61	0.72	0.96	1.24	1.55	1.82	1.99	2.02	1.93	1.72	1.47	1.23	1.04	0.97	1.03
7 SA	1.16	1.33	1.50	1.61	1.64	1.58	1.42	1.20	0.98	0.82	0.78	0.88	1.08	1.33	1.60	1.84	1.99	2.04	1.97	1.79	1.56	1.32	1.11	0.98
8 SU	0.95	1.01	1.13	1.28	1.39	1.45	1.46	1.39	1.24	1.07	0.95	0.92	0.98	1.13	1.34	1.60	1.84	2.01	2.10	2.07	1.91	1.69	1.42	1.15
9 M	0.91	0.78	0.79	0.90	1.05	1.20	1.34	1.44	1.44	1.33	1.19	1.07	1.00	1.00	1.11	1.31	1.58	1.84	2.06	2.20	2.21	2.06	1.81	1.49
10 TU	1.11	0.76	0.56	0.56	0.69	0.88	1.10	1.33	1.52	1.55	1.46	1.31	1.14	1.00	0.95	1.03	1.25	1.55	1.87	2.15	2.34	2.36	2.18	1.89
11 W	1.49	0.99	0.55	0.33	0.35	0.53	0.79	1.09	1.42	1.66	1.70	1.58	1.39	1.15	0.93	0.84	0.94	1.20	1.55	1.93	2.27	2.49	2.49	2.26
12 TH ☽	1.90	1.40	0.80	0.33	0.13	0.21	0.47	0.81	1.20	1.59	1.83	1.83	1.66	1.40	1.08	0.81	0.73	0.88	1.19	1.60	2.03	2.41	2.61	2.55
13 F	2.26	1.82	1.23	0.58	0.13	0.01	0.17	0.51	0.93	1.39	1.80	1.99	1.92	1.69	1.35	0.96	0.69	0.65	0.86	1.23	1.68	2.15	2.52	2.67
14 SA	2.53	2.17	1.66	1.00	0.37	0.00	-0.01	0.25	0.66	1.14	1.62	2.00	2.10	1.95	1.65	1.24	0.83	0.59	0.63	0.90	1.32	1.79	2.25	2.57
15 SU	2.63	2.41	1.99	1.43	0.77	0.21	-0.02	0.09	0.43	0.90	1.39	1.85	2.14	2.14	1.91	1.55	1.11	0.72	0.56	0.68	1.00	1.44	1.89	2.31

www.komuneresorts.com



Night Surfing @ Keramas

16 M	2.54	2.49	2.20	1.75	1.18	0.57	0.15	0.08	0.29	0.69	1.16	1.64	2.04	2.21	2.10	1.82	1.43	0.99	0.67	0.61	0.79	1.14	1.55	1.96
17 TU	2.29	2.40	2.26	1.94	1.49	0.95	0.45	0.20	0.27	0.56	0.97	1.42	1.85	2.14	2.19	2.01	1.70	1.30	0.92	0.70	0.71	0.93	1.27	1.63
18 W	1.96	2.18	2.19	1.99	1.67	1.25	0.78	0.44	0.35	0.52	0.84	1.24	1.64	1.98	2.15	2.11	1.89	1.58	1.21	0.91	0.79	0.85	1.07	1.36
19 TH	1.65	1.89	2.00	1.92	1.72	1.43	1.06	0.71	0.53	0.56	0.79	1.11	1.45	1.78	2.02	2.10	2.00	1.78	1.49	1.18	0.97	0.91	0.98	1.17
20 F ☽	1.39	1.60	1.75	1.77	1.66	1.49	1.26	0.96	0.74	0.69	0.79	1.02	1.30	1.58	1.84	2.00	2.01	1.90	1.70	1.45	1.21	1.07	1.02	1.07
21 SA	1.19	1.35	1.48	1.57	1.54	1.44	1.34	1.17	0.96	0.85	0.87	0.99	1.20	1.42	1.64	1.84	1.94	1.93	1.84	1.68	1.46	1.27	1.16	1.08
22 SU	1.07	1.14	1.23	1.32	1.37	1.35	1.31	1.28	1.17	1.04	1.00	1.04	1.13	1.28	1.45	1.64	1.80	1.88	1.89	1.84	1.70	1.51	1.34	1.20
23 M	1.06	0.99	1.01	1.07	1.16	1.22	1.25	1.29	1.31	1.24	1.16	1.14	1.14	1.18	1.29	1.43	1.61	1.78	1.87	1.92	1.90	1.76	1.56	1.38
24 TU	1.16	0.95	0.84	0.84	0.92	1.03	1.14	1.25	1.37	1.41	1.35	1.28	1.22	1.15	1.16	1.25	1.39	1.60	1.79	1.92	2.01	1.99	1.82	1.59
25 W	1.33	1.02	0.77	0.66	0.68	0.80	0.98	1.17	1.35	1.51	1.54	1.46	1.35	1.21	1.09	1.09	1.19	1.37	1.63	1.87	2.04	2.14	2.07	1.85
26 TH	1.56	1.20	0.81	0.55	0.48	0.56	0.77	1.03	1.30	1.53	1.68	1.66	1.52	1.34	1.12	0.98	1.00	1.15	1.40	1.72	2.01	2.20	2.26	2.12
27 F	1.82	1.44	0.98	0.56	0.35	0.35	0.53	0.84	1.18	1.50	1.74	1.83	1.72	1.51	1.24	0.97	0.86	0.94	1.16	1.49	1.87	2.18	2.36	2.34
28 SA ●	2.09	1.71	1.23	0.70	0.32	0.21	0.33	0.61	1.01	1.41	1.74	1.93	1.91	1.71	1.41	1.07	0.80	0.76	0.94	1.24	1.64	2.06	2.35	2.47
29 SU	2.34	1.98	1.52	0.97	0.44	0.15	0.18	0.41	0.80	1.25	1.67	1.97	2.06	1.91	1.62	1.25	0.87	0.66	0.73	1.00	1.37	1.82	2.23	2.48
30 M	2.49	2.23	1.79	1.27	0.69	0.23	0.10	0.26	0.61	1.06	1.54	1.93	2.13	2.09	1.83	1.46	1.04	0.69	0.59	0.77	1.11	1.53	1.98	2.35
31 TU	2.51	2.40	2.03	1.54	0.99	0.45	0.13	0.17	0.46	0.88	1.37	1.82	2.13	2.21	2.04	1.69	1.28	0.86	0.57	0.59	0.87	1.26	1.68	2.10

Get \$10 OFF the best value TRAVEL INSURANCE for Surfers @ www.indosurf.com.au

NOMAD TROPICAL RESORT WEST SUMBAWA



An all inclusive family friendly small hotel. Bring your wife, husband, kids or friends! Easy left point paddling distance 200 metres from your room. 26 Rooms and 3 Family Villas



THE SURF

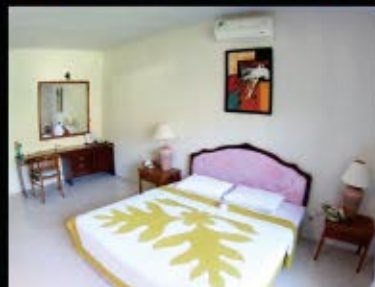
Tropical Left, a long easy rippable left point in front of the resort. Plus Tropical Right on the other side of the channel with fast takeoff that slows into deep water, perfect for beginners. Our surf guides also take you to Yoyos (10 minutes), Super Suck, Big Brother, Scar Reef, Little Bingin, Donuts and other secret spots... **NO CROWDS**... yet!

This part of Sumbawa gets good surf 12 months a year! June to August is biggest, perfect for Super Suck and Scar Reef, offshore winds all day. Sep-Nov and March-May can be the best at our frontyard Tropical Left and Right, glassy every morning with light winds some afternoons. Christmas, Jan and Feb are insane with easy glassy conditions



NEW BEACH FRONT HONEYMOON SUITES

with Private Swimming Pool, Jacuzzi, surf views. 3 Family Villas 2 bedroom with private Pool. Restaurant (Western Chef), Huge Swimming Pool, 9 Hole Golf Course, Gym, Private Airstrip, Childrens Playground, Veggie Garden, Aloe Vera & Dragon Fruit Plantation, SpeedBoat 40 HP (10 pax), Snorkles, Spear fishing gear, South African Surf guide, Masseur, Baby-Sitters, Surf Instructor, New Surfboard rental (Short and Long boards), WIFI Internet, Sat TV



PACKAGES

- 7 nights Accommodation
- Flights and transport from Bali return
- Big Buffet Breakfast, Lunch and Dinners
- Daily Surf Guide and transfers to local Breaks
- Children under 12 pay only 50%
- Speed Boat: Surfing, Fishing, spearfishing, BBQ
- 1 day Golf Green Fee and Golf Club rental



TESTIMONIAL

"Nomad Tropical Resort is one of the best I've been to. Its mellow fun and you can surf all day, at the left out front, YoYo's down the road and Super Suck close by. If you want a fun uncrowded surf trip, with a variety of waves, this is the place to go!"

John John Florence (pro surfer)

